



Workforce Overview

Kilgore Labor Draw Area & the City of Kilgore



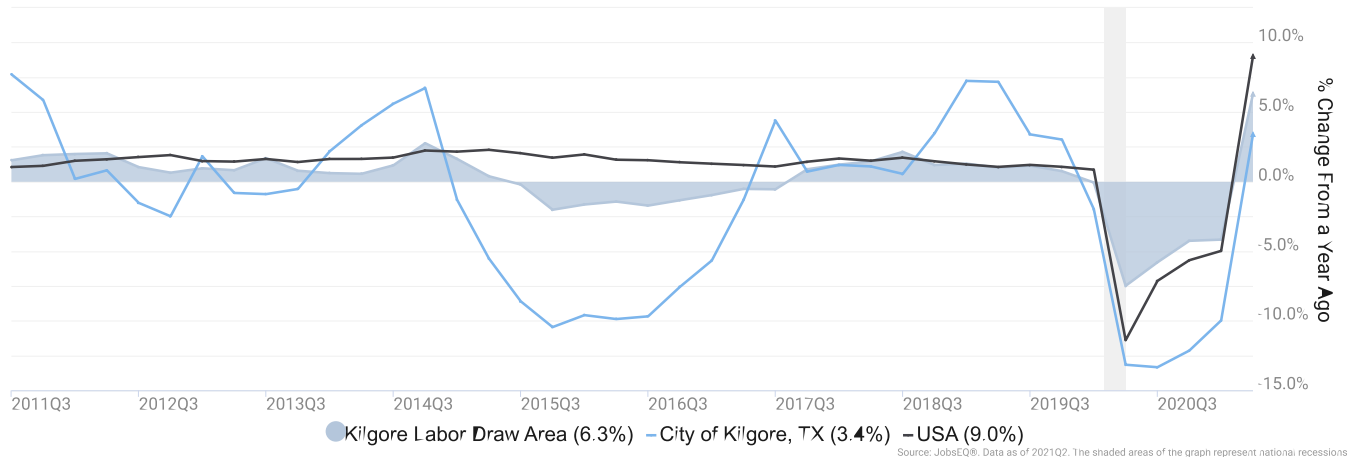
1001 Synergy Blvd., 100
Kilgore TX 75662
903 983 3522
www.kilgore-edc.com

Employment Trends 3
Unemployment Rate 3
Wage Trends..... 4
Industry Snapshot..... 5
Occupation Snapshot 7
Education Levels..... 9
Kilgore Labor Draw Area Regional Map 10
Region Definition..... 11
FAQ..... 12

Employment Trends

As of 2021Q2, total employment for the Kilgore Labor Draw Area was 294,784 (based on a four-quarter moving average). Over the year ending 2021Q2, employment increased 6.3% in the region.

Employment for Kilgore Labor Draw Area

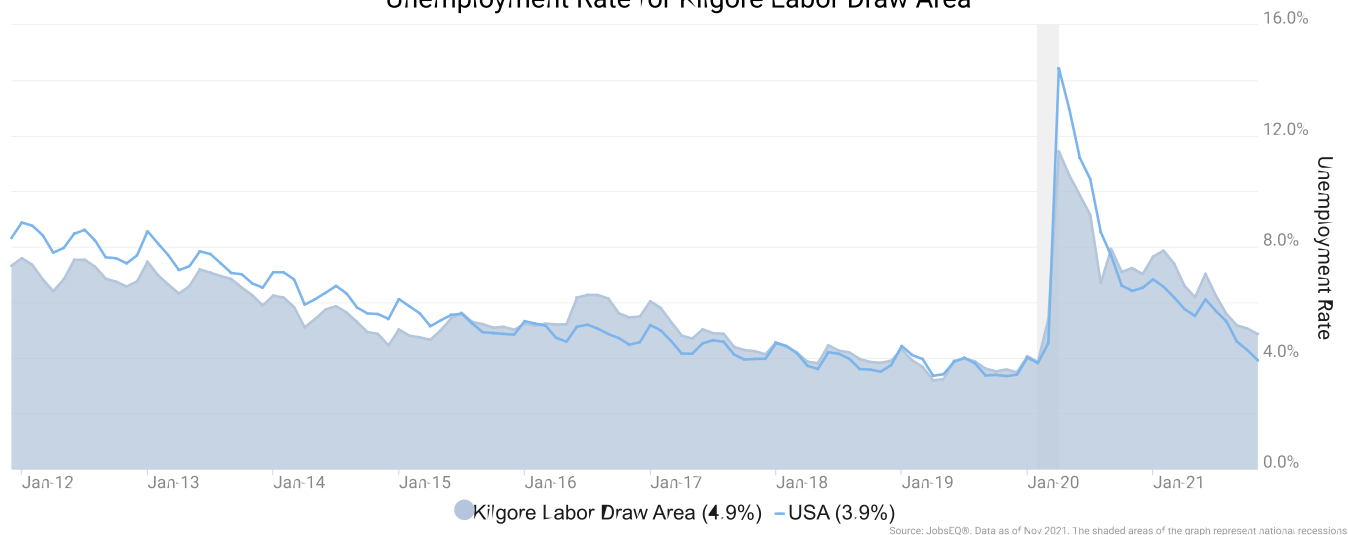


Employment data are derived from the Quarterly Census of Employment and Wages, provided by the Bureau of Labor Statistics and imputed where necessary. Data are updated through 2021Q1 with preliminary estimates updated to 2021Q2.

Unemployment Rate

The unemployment rate for the Kilgore Labor Draw Area was 4.9% as of November 2021, compared to the national rate of 3.9%. One year earlier, in November 2020, the unemployment rate in the Kilgore Labor Draw Area was 7.2%.

Unemployment Rate for Kilgore Labor Draw Area

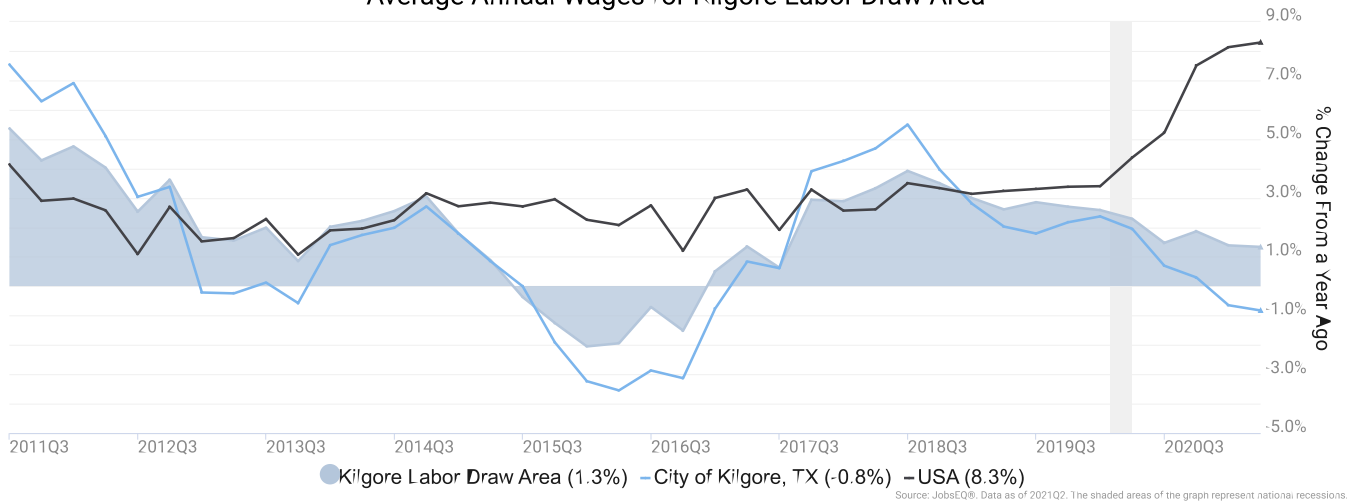


Unemployment rate data are from the Local Area Unemployment Statistics, provided by the Bureau of Labor Statistics and updated through November 2021.

Wage Trends

The average worker in the Kilgore Labor Draw Area earned annual wages of \$45,670 as of 2021Q2. Average annual wages per worker increased 1.3% in the region over the preceding four quarters. For comparison purposes, annual average wages were \$64,141 in the nation as of 2021Q2.

Average Annual Wages for Kilgore Labor Draw Area

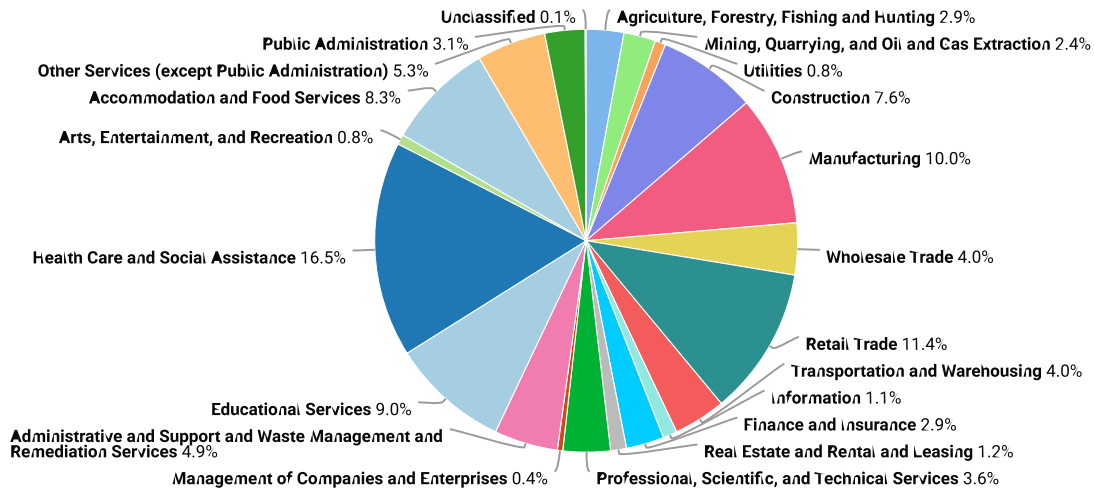


Annual average wages per worker data are derived from the Quarterly Census of Employment and Wages, provided by the Bureau of Labor Statistics and imputed where necessary. Data are updated through 2021Q1 with preliminary estimates updated to 2021Q2.

Industry Snapshot

The largest sector in the Kilgore Labor Draw Area is Health Care and Social Assistance, employing 48,610 workers. **The next-largest sectors in the region are Retail Trade (33,518 workers) and Manufacturing (29,352).** High location quotients (LQs) indicate sectors in which a region has high concentrations of employment compared to the national average. The sectors with the largest LQs in the region are Mining, Quarrying, and Oil and Gas Extraction (LQ = 7.01), Agriculture, Forestry, Fishing and Hunting (2.05), and Utilities (1.55).

Total Workers for Kilgore Labor Draw Area by Industry



Source: JobsEQ®, Data as of 2021Q2

Employment data are derived from the Quarterly Census of Employment and Wages, provided by the Bureau of Labor Statistics and imputed where necessary. Data are updated through 2021Q1 with preliminary estimates updated to 2021Q2.

Kilgore Labor Draw Area, 2021Q2¹

NAICS	Industry	Empl	Current	2-Year History			5-Year Forecast				
			Avg Ann Wages	LQ	Empl Change	Ann %	Total Demand	Exits	Transfers	Empl Growth	Ann % Growth
62	Health Care and Social Assistance	48,610	\$51,350	1.11	-2,088	-2.1%	27,295	11,631	12,024	3,639	1.5%
44	Retail Trade	33,518	\$33,448	1.09	778	1.2%	21,467	9,783	12,361	-677	-0.4%
31	Manufacturing	29,352	\$55,032	1.21	-767	-1.3%	14,246	5,556	9,514	-824	-0.6%
61	Educational Services	26,600	\$42,633	1.12	11	0.0%	12,291	5,908	6,375	8	0.0%
72	Accommodation and Food Services	24,331	\$17,994	1.09	-1,040	-2.1%	20,663	8,820	11,108	735	0.6%
23	Construction	22,299	\$50,369	1.28	-1,286	-2.8%	11,097	3,927	7,027	143	0.1%
81	Other Services (except Public Administration)	15,549	\$29,832	1.22	-299	-0.9%	9,187	4,067	4,855	265	0.3%
56	Administrative and Support and Waste Management and Remediation Services	14,370	\$33,115	0.77	-547	-1.8%	8,755	3,544	4,834	377	0.5%
48	Transportation and Warehousing	11,760	\$54,963	0.81	20	0.1%	6,391	2,669	3,612	110	0.2%
42	Wholesale Trade	11,674	\$62,745	1.05	-560	-2.3%	5,860	2,285	3,786	-211	-0.4%
54	Professional, Scientific, and Technical Services	10,626	\$65,309	0.51	-454	-2.1%	4,791	1,699	2,876	216	0.4%
92	Public Administration	9,055	\$51,494	0.62	226	1.3%	4,214	1,761	2,396	57	0.1%
52	Finance and Insurance	8,545	\$64,142	0.69	87	0.5%	3,973	1,506	2,472	-4	0.0%
11	Agriculture, Forestry, Fishing and Hunting	8,505	\$20,077	2.05	19	0.1%	4,223	1,926	2,597	-301	-0.7%
21	Mining, Quarrying, and Oil and Gas Extraction	7,132	\$79,572	7.01	-4,158	-20.5%	4,333	1,224	2,542	567	1.5%
53	Real Estate and Rental and Leasing	3,567	\$51,434	0.70	-525	-6.6%	1,725	813	973	-61	-0.3%
51	Information	3,191	\$56,663	0.55	-130	-2.0%	1,326	540	958	-171	-1.1%
22	Utilities	2,432	\$92,893	1.55	70	1.5%	886	383	675	-171	-1.5%
71	Arts, Entertainment, and Recreation	2,235	\$24,391	0.48	-208	-4.3%	1,729	720	889	120	1.1%
55	Management of Companies and Enterprises	1,214	\$102,889	0.27	21	0.9%	578	204	348	26	0.4%
99	Unclassified	220	\$36,979	0.58	79	25.1%	129	53	72	4	0.3%
Total - All Industries		294,784	\$45,670	1.00	-10,749	-1.8%	165,496	69,007	92,449	4,040	0.3%

Source: [JobsEQ®](https://www.chmuraecon.com/jobseq)

Data as of 2021Q2

Note: Figures may not sum due to rounding.

1. All data based upon a four-quarter moving average.

Exits and transfers are approximate estimates based upon occupation separation rates.

Employment data are derived from the Quarterly Census of Employment and Wages, provided by the Bureau of Labor Statistics and imputed where necessary. Data are updated through 2021Q1 with preliminary estimates updated to 2021Q2. Forecast employment growth uses national projections adapted for regional growth patterns.

Occupation Snapshot

The largest major occupation group in the Kilgore Labor Draw Area is Office and Administrative Support Occupations, employing 34,985 workers. The next-largest occupation groups in the region are Sales and Related Occupations (28,826 workers) and Transportation and Material Moving Occupations (25,078). High location quotients (LQs) indicate occupation groups in which a region has high concentrations of employment compared to the national average. The major groups with the largest LQs in the region are Construction and Extraction Occupations (LQ = 1.36), Production Occupations (1.22), and Healthcare Support Occupations (1.16).

Occupation groups in the Kilgore Labor Draw Area with the highest average wages per worker are Legal Occupations (\$97,900), Management Occupations (\$91,900), and Architecture and Engineering Occupations (\$81,300). The unemployment rate in the region varied among the major groups from 2.0% among Legal Occupations to 14.6% among Food Preparation and Serving Related Occupations.

Over the next 5 years, the fastest growing occupation group in the Kilgore Labor Draw Area is expected to be Healthcare Support Occupations with a +2.2% year-over-year rate of growth. The strongest forecast by number of jobs over this period is expected for Healthcare Support Occupations (+1,769 jobs) and Healthcare Practitioners and Technical Occupations (+933). Over the same period, the highest separation demand (occupation demand due to retirements and workers moving from one occupation to another) is expected in Food Preparation and Serving Related Occupations (21,166 jobs) and Sales and Related Occupations (19,952).

Kilgore Labor Draw Area, 2021Q2¹

SOC	Occupation	Empl	Mean Ann Wages ²	Current			2-Year History			5-Year Forecast				
				LQ	Unempl	Unempl Rate	Online Job Ads ³	Empl Change	Ann %	Total Demand	Exits	Transfers	Empl Growth	Ann % Growth
43-0000	Office and Administrative Support	34,985	\$36,600	0.93	2,252	5.8%	1,276	-2,049	-2.8%	18,914	8,331	11,458	-875	-0.5%
41-0000	Sales and Related	28,826	\$38,200	1.02	2,681	8.6%	2,275	-401	-0.7%	19,475	7,837	12,115	-478	-0.3%
53-0000	Transportation and Material Moving	25,078	\$35,700	0.99	2,412	8.5%	2,076	-88	-0.2%	16,128	5,668	10,195	265	0.2%
35-0000	Food Preparation and Serving Related	23,974	\$22,800	1.09	4,255	14.6%	1,709	-884	-1.8%	21,966	8,668	12,498	800	0.7%
51-0000	Production	20,831	\$39,100	1.22	1,793	7.9%	461	-1,007	-2.3%	11,035	3,850	7,835	-650	-0.6%
11-0000	Management	20,822	\$91,900	1.05	571	2.9%	670	-237	-0.6%	9,001	3,393	5,560	48	0.0%
29-0000	Healthcare Practitioners and Technical	18,698	\$75,200	1.07	481	2.6%	2,552	-355	-0.9%	6,546	2,577	3,036	933	1.0%
47-0000	Construction and Extraction	18,641	\$42,900	1.36	1,968	9.6%	172	-3,003	-7.2%	11,297	3,019	7,808	469	0.5%
25-0000	Educational Instruction and Library	18,056	\$43,700	1.11	1,109	6.3%	88	-7	0.0%	8,098	3,623	4,350	125	0.1%
31-0000	Healthcare Support	15,461	\$26,600	1.16	921	5.5%	846	-621	-2.0%	12,321	5,094	5,458	1,769	2.2%
49-0000	Installation, Maintenance, and Repair	12,941	\$47,300	1.15	869	6.1%	564	-681	-2.5%	6,456	2,036	4,310	110	0.2%
13-0000	Business and Financial Operations	10,990	\$69,900	0.64	333	3.2%	426	-62	-0.3%	5,470	1,527	3,759	183	0.3%
37-0000	Building and Grounds Cleaning and Maintenance	10,397	\$26,600	1.09	1,008	8.8%	376	-350	-1.6%	7,304	2,965	4,008	331	0.6%
39-0000	Personal Care and Service	6,301	\$27,600	0.84	962	12.9%	163	-197	-1.5%	5,035	2,157	2,649	229	0.7%
33-0000	Protective Service	5,322	\$44,400	0.84	299	5.0%	196	-72	-0.7%	2,728	1,141	1,563	24	0.1%
21-0000	Community and Social Service	5,162	\$47,700	0.98	89	2.0%	291	14	0.1%	3,278	1,024	1,923	331	1.3%
17-0000	Architecture and Engineering	4,202	\$81,300	0.83	164	4.0%	124	-413	-4.6%	1,666	503	1,168	-5	0.0%
15-0000	Computer and Mathematical	4,182	\$75,200	0.45	98	2.5%	225	-19	-0.2%	1,675	359	1,216	100	0.5%

Kilgore Labor Draw Area, 2021Q2¹

SOC	Occupation	Empl	Mean Ann Wages ²	Current			2-Year History			Total Demand	5-Year Forecast			
				LQ	Unempl	Unempl Rate	Online Job Ads ³	Empl Change	Ann %		Exits	Transfers	Empl Growth	Ann % Growth
27-0000	Arts, Design, Entertainment, Sports, and Media	3,763	\$43,600	0.72	310	8.7%	86	-41	-0.5%	2,080	754	1,313	12	0.1%
19-0000	Life, Physical, and Social Science	2,162	\$65,300	0.80	69	3.5%	97	-150	-3.3%	1,022	214	764	44	0.4%
45-0000	Farming, Fishing, and Forestry	2,160	\$30,200	1.09	205	8.6%	24	0	0.0%	1,682	421	1,296	-34	-0.3%
23-0000	Legal	1,830	\$97,900	0.72	36	2.0%	9	-125	-3.3%	644	234	378	32	0.3%
Total - All Occupations		294,784	\$45,700	1.00	22,886	7.3%	14,707	-10,749	-1.8%	173,986	65,397	104,659	3,930	0.3%

Source: [JobsEQ®](https://www.chmuraecon.com/jobseq)

Data as of 2021Q2 unless noted otherwise

Note: Figures may not sum due to rounding.

1. Data based on a four-quarter moving average unless noted otherwise.

2. Wage data are as of 2020 and represent the average for all Covered Employment

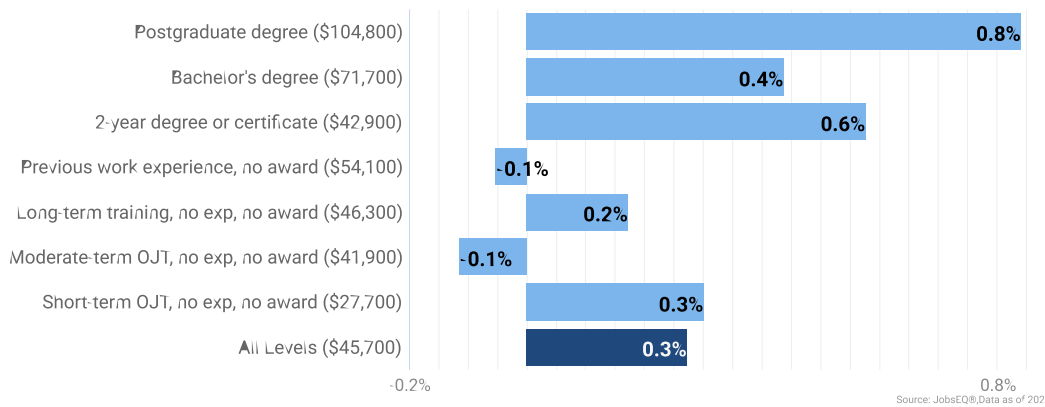
3. Data represent found online ads active within the last thirty days in the selected region; data represents a sampling rather than the complete universe of postings. Ads lacking zip code information but designating a place (city, town, etc.) may be assigned to the zip code with greatest employment in that place for queries in this analytic. Due to alternative county-assignment algorithms, ad counts in this analytic may not match that shown in RTI (nor in the popup window ad list).

Occupation employment data are estimated via industry employment data and the estimated industry/occupation mix. Industry employment data are derived from the Quarterly Census of Employment and Wages, provided by the Bureau of Labor Statistics and currently updated through 2021Q1, imputed where necessary with preliminary estimates updated to 2021Q2. Wages by occupation are as of 2020 provided by the BLS and imputed where necessary. Forecast employment growth uses national projections from the Bureau of Labor Statistics adapted for regional growth patterns.

Education Levels

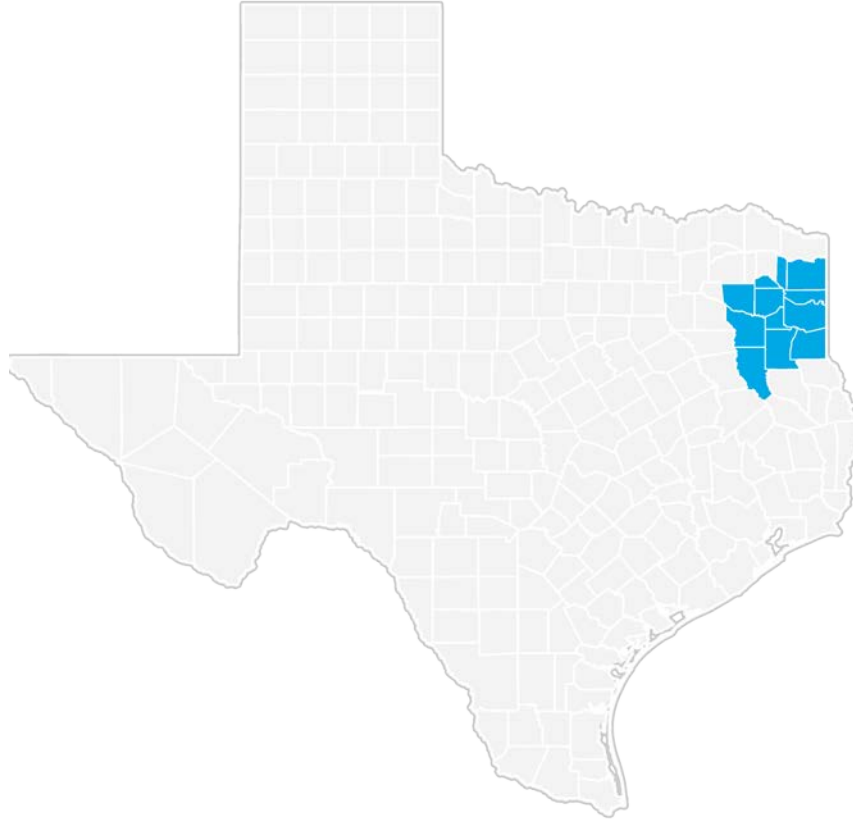
Expected growth rates for occupations vary by the education and training required. While all employment in the Kilgore Labor Draw Area is projected to grow 0.3% over the next ten years, occupations typically requiring a postgraduate degree are expected to grow 0.8% per year, those requiring a bachelor's degree are forecast to grow 0.4% per year, and occupations typically needing a 2-year degree or certificate are expected to grow 0.6% per year.

Annual Average Projected Job Growth by Training Required for Kilgore Labor Draw Area



Employment by occupation data are estimates as of 2021Q2. Education levels of occupations are based on BLS assignments. Forecast employment growth uses national projections from the Bureau of Labor Statistics adapted for regional growth patterns.

Kilgore Labor Draw Area Regional Map



Region Definition

Kilgore Labor Draw Area is defined as the following counties:

Camp County, Texas

Cass County, Texas

Cherokee County, Texas

Gregg County, Texas

Harrison County, Texas

Marion County, Texas

Morris County, Texas

Panola County, Texas

Rusk County, Texas

Smith County, Texas

Upshur County, Texas

Wood County, Texas

FAQ

What is a location quotient?

A location quotient (LQ) is a measurement of concentration in comparison to the nation. An LQ of 1.00 indicates a region has the same concentration of an industry (or occupation) as the nation. An LQ of 2.00 would mean the region has twice the expected employment compared to the nation and an LQ of 0.50 would mean the region has half the expected employment in comparison to the nation.

What is separation demand?

Separation demand is the number of jobs required due to separations—labor force exits (including retirements) and turnover resulting from workers moving from one occupation into another. Note that separation demand does not include all turnover—it does not include when workers stay in the same occupation but switch employers. The total projected demand for an occupation is the sum of the separation demand and the growth demand (which is the increase or decrease of jobs in an occupation expected due to expansion or contraction of the overall number of jobs in that occupation).

What is the difference between industry wages and occupation wages?

Industry wages and occupation wages are estimated via separate data sets, often the time periods being reported do not align, and wages are defined slightly differently in the two systems (for example, certain bonuses are included in the industry wages but not the occupation wages). It is therefore common that estimates of the average industry wages and average occupation wages in a region do not match exactly.

What is NAICS?

The North American Industry Classification System (NAICS) is used to classify business establishments according to the type of economic activity. The NAICS Code comprises six levels, from the “all industry” level to the 6-digit level. The first two digits define the top-level category, known as the “sector,” which is the level examined in this report.

What is SOC?

The Standard Occupational Classification system (SOC) is used to classify workers into occupational categories. All workers are classified into one of over 804 occupations according to their occupational definition. To facilitate classification, occupations are combined to form 22 major groups, 95 minor groups, and 452 occupation groups. Each occupation group includes detailed occupations requiring similar job duties, skills, education, or experience.

About This Report

This report and all data herein were produced by JobsEQ®, a product of Chmura Economics & Analytics. The information contained herein was obtained from sources we believe to be reliable. However, we cannot guarantee its accuracy and completeness.